

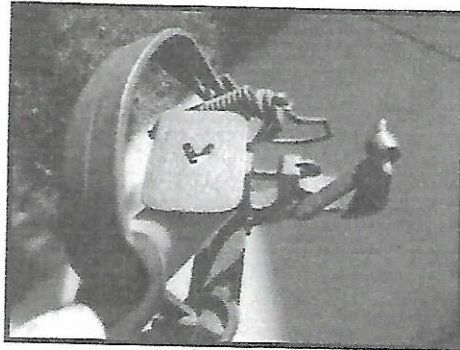
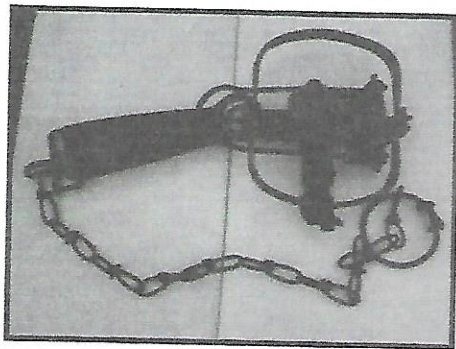
Stoploss Prototype

By Scot H. Dahms

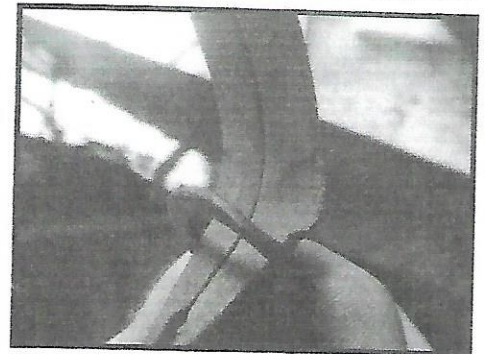
A member of the North American Trap Collectors Association had this unique trap and wanted to know more information about it. It is a stoploss with the Victor pan attached upside down. The pan shank is a frame made of sheet metal and allows the trap to be set with nothing over the top of the stoploss bail except for the jaws. The sheet metal pan shank is attached to bumps on the outside of the cross.

with the looped corners.

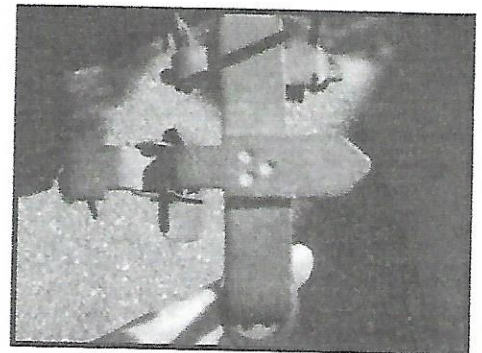
Pete said that when he put desk top traps together, whatever parts were available were used and it did matter if the pan was upright or not. Pete also commented that the cast jaws with the unique shoulders in the picture were not put into production.



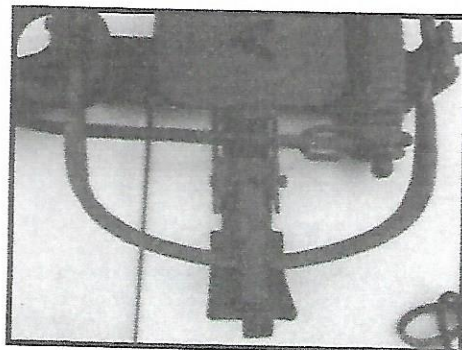
Pan shank



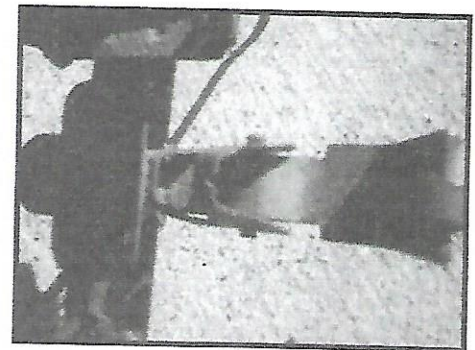
Jaw shoulder



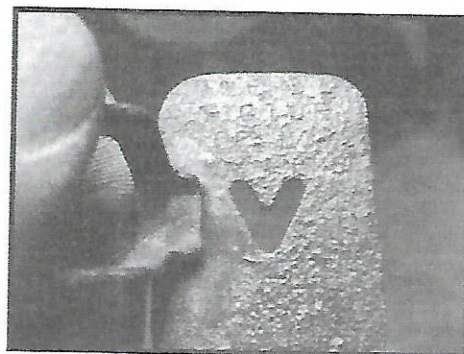
Underside of trap



Trap shank



Pan shank



Underside of pan

I contacted Pete Askins and he provided the following information. The information is his opinion of the trap and is printed with his permission. Pete had never seen the trap before but thought the trap was a prototype made by John Laine. John was in the research development position that Pete would have years later.

Laine started with Animal Trap Company either in 1925 or within a couple of years of that and worked to the late 1950's or 1960. The position was vacant from 1960 to 1975 when Pete was hired. When Pete met John in 1975, John already had Alzheimer's and his memory was not reliable. At that time, John was living in a hotel where his daughter would visit him from time to time. John died in 1976.

Pete stated that the stoploss bail is situated the way it is so that when tripped, there is no metal on metal contact. He believes it was made that way to avoid legal issues with the Triumph patent.

Pete also said that John did most of the development of the Conibear trap. Frank Conibear had the idea for the rotating jaws, but John developed the square jaw Conibear trap which was produced. When the patent was running out on the Conibear trap, Pete developed the Generation 2 Conibears

I want to thank Pete for taking the time to answer my questions about this trap. If anyone has any information contrary to what I have included here, I would appreciate them responding by phone, email, mail or in the magazine.

Scot H. Dahms
2270 W Willow Lane
Peru, Indiana 46970
765-327-1531
ranger1971@comcast.net